



TASTE  
EXPERIENCE

[WWW.DAJANIAGRI.COM](http://WWW.DAJANIAGRI.COM)

DAJANI AGRIBUSINESS

LANDSCAPE ARCHITECTURE  
& FRUIT TREES EXPERT

TASTE  
ART  
EXPERIENCE

# DAJANI AGRIBUSINESS

LANDSCAPE ARCHITECTURE  
& FRUIT TREES EXPERT

## **About Dajani Agribusiness**

Company Profile -

Our Vision -

Our Mission -

Our Philosophy -

History -

## **Services**

**Commercial Projects**

**List Of Referances**

**Contact Information**





# DAJANI AGRIBUSINESS

LANDSCAPE ARCHITECTURE  
& FRUIT TREES EXPERT

## Company Profile

---

Established in 1991 in the heart of Jordan's urban development, **Dajani Agribusiness** is an award-winning landscape architecture company founded by Engineer Maher Dajani after a captivating mentorship in fruit and ornamental trees throughout Europe.

During our journey, we proudly emerged as trailblazers in the field of landscape design in Jordan, providing innovative and modern services encompassing both hardscape and softscape design.



# DAJANI AGRIBUSINESS

LANDSCAPE ARCHITECTURE  
& FRUIT TREES EXPERT

**Dajani Agribusiness** provides eco-conscious services in the design and implementation of lighting and irrigation systems. Our expertise covers a wide range of projects, including small residential properties, malls, banks, parks, and resorts, both locally and internationally. However, our offerings extend beyond that. We also specialize in Plantscaping, Banqueting, Fruit trees, Fresh-line, Project management, as well as Renovation & Remodeling.

**Dajani Agribusiness** leverages the collective expertise of our skilled team comprising designers, landscapers, and horticulture experts. With seamless collaboration, we integrate all project components for the successful construction of landscaping projects.





# DAJANI AGRIBUSINESS

LANDSCAPE ARCHITECTURE  
& FRUIT TREES EXPERT

## **Our Vision**

To become the leading landscape design and services provider in the Middle East. We aim to meet customer needs through modern scientific approaches, utilizing high-quality products, and delivering eco-conscious, creative solutions. Our team of experienced and qualified professionals is dedicated to offering exceptional landscape design services tailored to any unique requirement.







# DAJANI AGRIBUSINESS

LANDSCAPE ARCHITECTURE  
& FRUIT TREES EXPERT

## **Our Mission**

---

To provide professional landscape design, installation and maintenance services with master planning, meticulous development, and the socio-cultural knowledge to enhance property value and build sustainable ecosystems.

Whether it is a residential or commercial landscape, our innovative strategies and creative use of technology combines the fields of arts and science to achieve the highest efficiency of hardscape and softscape expertise, both at a competitive rate and with exceptional customer satisfaction.





# DAJANI AGRIBUSINESS

LANDSCAPE ARCHITECTURE  
& FRUIT TREES EXPERT

## **Our Philosophy**

---

### **“ A Small Space is Never a Small Garden”**

Our core philosophy is to instill secure trust in our clients, allowing them to invest in our seasoned experience, refined taste, and cultural wisdom. We are dedicated to realizing your desired vision and crafting an idyllic outdoor space.





# DAJANI AGRIBUSINESS

LANDSCAPE ARCHITECTURE  
& FRUIT TREES EXPERT

## History

---

Since **1991**, we have cultivated an exceptional reputation by prioritizing the holistic appreciation of each project, including the harmonious integration of all landscape elements. Our designs capture the distinctive essence of the owner, the site, and the budget, resulting in a truly personalized and remarkable space.

**Dajani agribusiness**, renowned as fruit experts in Jordan and the surrounding region, provides an extensive array of services and products related to fruit tree supply, consultation, and project management. We specialize in handling turnkey projects, ensuring seamless execution from start to finish.





# DAJANI AGRIBUSINESS

LANDSCAPE ARCHITECTURE  
& FRUIT TREES EXPERT

## **Services**

---

As a comprehensive landscape company, we offer a complete range of services to meet all your landscaping needs. Our expertise encompasses the design of hardscapes, aquascape, woodworks, softscapes, lighting systems, and irrigation systems, as well as construction and implementation.

Additionally, we provide Jordan's premier Garden Care program, ensuring the ongoing maintenance and care of your outdoor spaces. Whether you are a residential or commercial client, our landscape packages are tailored to suit your individual requirements. We take pride in creating customized designs and concepts that uniquely satisfy the preferences and desires of each customer.



# DAJANI AGRIBUSINESS

LANDSCAPE ARCHITECTURE  
& FRUIT TREES EXPERT

1. Landscape Archticture
  - Landscape Design
  - Soft Landscape
  - Hardscape & Woodworks
  - Lighting System
  - Irrigation System
  - Lawnscape
  - Aquascape & Swimming Pool
2. Garden Care
3. Renovation & Remodeling
4. Plantscaping & Banqueting
5. Fruit Trees & Project Management





# DAJANI AGRIBUSINESS

LANDSCAPE ARCHITECTURE  
& FRUIT TREES EXPERT

## **Royal Jordanian New Headquarters**

---

A successful landscape design harmoniously integrates nature, functionality, and visually appealing yet practical concepts. The distinctive location of this site for RJ demanded specialized expertise in infrastructure and a visionary approach with a meticulously executed plan to create an exceptional garden that embodies the values of our national courier, propelling us towards a new horizon.

Location: Amman, Jordan

Scope of work: Soft Landscape Implementation Package.  
Contracting, Garden Care & Landscaping.

BUA: 9,095.00 m<sup>2</sup>



ROYAL JORDANIAN

## **Al Tajamouat for Touristic Projects Co. Plc / Taj Mall**

---

The design of the Mall aimed to create comfortable microclimates that enhance visual appeal and provide a relaxing environment, juxtaposed with the business-centric atmosphere. The incorporation of green elements, such as trees, plants, shrubs, and water features in the open spaces of the mall garnered the highest preference.

Location: Amman, Jordan

Scope of work: Soft Landscape, Irrigation & Lighting - Design, Installation, Garden Care & Landscaping.

BUA: 150,000.00 m<sup>2</sup>



## **Rotana Tower Hotel**

---

The Rotana Tower Hotel can be found in Al Abdali, the new downtown area of Amman. This luxurious 5-star hotel caters to both business travelers and vacationers, providing them with the tranquility and comfort of home, combined with the opulence and contemporary grandeur unique to the Amman Rotana Tower.

Amman Rotana Tower is the first tower hotel in Jordan offering 412 luxury hotel rooms and suites, housed across 50 floors at 188 metres high.

Location: Amman, Jordan

Scope of work: Soft Landscape Implementation Package.  
Design ,Installation, Garden Care & Plantscaping.

BUA: 70,000.00 m2



## **Housing Bank for Trade and Investment- New Headquarters**

---

The landscape design considers the functions of different space typology, including atria, corridors, lobbies, and walkways. This approach aims to encourage visitors to stay longer by creating functional indoor spaces that provide suitable amenities and a comfortable environment.

This ultra-modern architecture upholds Jordanian traditions of warmth & hospitality.

The integration of both hard and soft designs across all dimensions results in a solid, dependable, and contemporary foundation, complemented by warm and inviting services.

Location: Amman, Jordan

Scope of work: Hard, Soft Landscape, Irrigation systems & Lighting systems design

BUA: 78,737.00 m<sup>2</sup>





## **The Galleria Mall**

---

Policymakers can leverage the mall's design as an opportunity to further develop the concept of a 'shopping town,' aiming to enhance people's leisure experiences within malls. This strategic approach should encompass various elements such as dynamic cascading waterfalls, renowned landmarks, easily accessible libraries, picturesque gardens, immersive community events, and culturally enriching activities.

The landscape design of the mall caters to business professionals, leisure enthusiasts, diners, and visitors of all kinds, offering an enticing, lively, yet tranquil atmosphere.

Location: Amman, Jordan

Scope of work: Soft Landscape Implementation Package. Design ,Installation, Garden Care & Plantscaping.

BUA: 108,626.00 m2



## **Ayla Oasis**

---

Ayla Oasis is uniquely positioned on the shoreline of Aqaba as an inspirational waterfront development, passionately sculpted out of the coast of Aqaba and the Red Sea, providing an additional 17 kilometers of waterfront living in a private community covering an area of 4.3 million sqm. The development's construction commenced in 2008 and will be carried out in various phases.

Ayla Oasis is centered around captivating turquoise man-made lagoons, encompassed by residential and retail developments. The project encountered challenges related to soil, water, plant selection, and climatic conditions, which necessitated a meticulous understanding of agriculture to ensure its ongoing progress and growth.

Location: Aqaba, Jordan

Scope of work: 1. Soft Landscape full site Assessment  
2. Irrigation system design in two islands

BUA: 4,319,245.560 m<sup>2</sup>



## **Saraya Aqaba New Offsite Facilities**

---

The Saraya Development project is intended for use by hotel operators such as Jumeirah and Starwood. The design approach for both the Hard and Soft Landscapes prioritized simplicity and functionality, guaranteeing the efficient distribution of essential amenities and components to cater to the needs of the staff and their families effectively.

Location: Aqaba, Jordan

Scope of work: Hard, Soft Landscape, Irrigation systems & Lighting systems design

BUA: 52,000.00 m<sup>2</sup>



## **Al-Murjan 200 Bed Hospital on Kings Road**

---

Al-Murjan Hospital aims to be a well-functioning general hospital offering high-quality healthcare services, with a capacity of 200 beds. Additionally, it embraces an innovative design philosophy that prioritizes an environment conducive to coordinated clinician care, and is achieved through the integration of appropriate and advanced technology.

Location: Jeddah, Saudi Arabia

Scope of work: Hard, Soft Landscape, Irrigation systems & Lighting systems design

BUA: 100,000.00 m<sup>2</sup>





## **The 60 mosques, within the “Improvement of traffic safety and mosques development project” (Phase II) in Riyadh**

---

Everything is interconnected in Islamic culture, and the designs adopted for this project reflect this philosophy. The mosque’s site and spaces were thoroughly evaluated, considering perceptions, user preferences, safety enhancements, and the smooth flow of pedestrians and vehicles. Rajhi Mosque and King Khaled Mosque were chosen as exemplary illustrations that effectively embody both the hard and soft elements of this approach.

Location: Riyadh, Saudi Arabia

Scope of work: Hard, Soft Landscape, Irrigation systems & Lighting systems design

BUA:



## **Palestinian Embassy and the Palestinian Ambassador Residence in Khartoum**

---

The Palestinian Embassy in Khartoum, Sudan, will serve as a significant symbol of the Palestinian government. The landscape design draws inspiration from traditional Palestinian architecture, incorporating elements like arches, cornices, and courtyards. The goal is to blend the essence and cultures of both countries, creating a harmonious representation.

The design aims to establish a revitalizing and welcoming atmosphere that contributes to modifying the microclimate of the site. The strategic selection of trees, shrubs, vines, and ground covers creates a subtropical ambiance, immersing the area in a soothing and carefully curated natural environment.

Location: Khartoum, Sudan

Scope of work: Hard, Soft Landscape, Irrigation systems & Lighting systems design

BUA: 22,750.00 m<sup>2</sup>



## Mozoon Towers

Mozoon Towers is a four-tower complex under development on a plot land of 29,395 m<sup>2</sup>, with a total construction area of 435,503 m<sup>2</sup>. Hotel rooms and Apartments of 1,797 unit and 2,252 car parks, detailed as follows:

-Tower "A" – Hotel and Hotel Apartments (5B+G+25) – Operated by Oberoi Hotels and Resorts under Brand name "The Oberoi – Doha".

-Tower "B" – Hotel (5B+G+32) – Operated by Marriott International under Brand names "Renaissance Hotel" and "Courtyard Hotel".

-Tower "C" – Hotel Apartments (5B+G+37)– Operated by Retaj Hotels & Hospitality under Brand name "Retaj Suites and Residence".

-Tower "D" – Hotel Apartments (5B+G+45) – Operated by Marriott International under Brand names "Marriott Executive Apartments" and "Marriott Residence Inn".

Location: Doha, Qatar

Scope of work: BIM Moudling For all system by MORIA Consulting Engineers JV

BUA: 435,503.00 m<sup>2</sup>



Marriott  
MANAGEMENT

Marriott

COURTYARD  
by Marriott

## **Four Seasons Hotel**

---

The project will be situated within the Corniche District, where guests and homeowners will be enchanted by the captivating views of the Red Sea and Jeddah's classic architecture. These architectural marvels reflect the city's rich history spanning over 2000 years.

The upcoming Four Seasons will enjoy a strategic location near key business hubs, the historic Al-Balad area, the bustling Tahlia Street shopping district, and the Formula 1 Jeddah street circuit. This proximity provides both future travelers and residents with compelling reasons to visit and live in the vibrant and ever-growing metropolitan destination, also referred to as New Jeddah Corniche.

Location: Jeddah, Saudi Arabia

Scope of work: BIM Moudling For all system by MORIA Consulting Engineers JV

BUA: 200,000.00 m2





## **Grand Terminal Port Project**

---

The Grand Terminal is a two-story rectangular building consisting of two twin terminals situated across two levels. The construction of the terminal will be carried out in two phases. During the first phase, the twin terminals, a city gallery, an aquarium, and parking facilities will be completed. The second phase will encompass the remaining facilities, including the proposed panoramic restaurant and the proposed botanical garden.

Location: Doha, Qatar

Scope of work: BIM Moudling For all system by MORIA Consulting Engineers JV

BUA: 25,000.00 m<sup>2</sup>



## **The Fountain Mall**

---

The site stands as a prominent commercial landmark in a significant location within the city of Aqaba. Its purpose is to offer a one-of-a-kind and remarkable shopping experience, catering to the needs of the local community, as well as tourists and visitors alike.

The median island, which acts as a divider between the project and the main tourist road, serves as the project's flag. It will reflect the overall project's qualities, values, and modern building design, showcasing the expected level of services it will provide.

Location: Aqaba, Jordan

Scope of work: Hard, Soft Landscape, Irrigation systems & Lighting systems design & Supervision

BUA: 21,000.00 m<sup>2</sup>



## **Al Manal Tourism Complex (VIP Club, Food courts, Gardens & Luna Park)**

---

The design aims to establish a unique and cohesive landscape character for the Regional Commercial/Mixed-Use District. This will be achieved by creating visually harmonious elements, establishing pedestrian connections, and incorporating functional spaces that span across various districts and streetscapes.

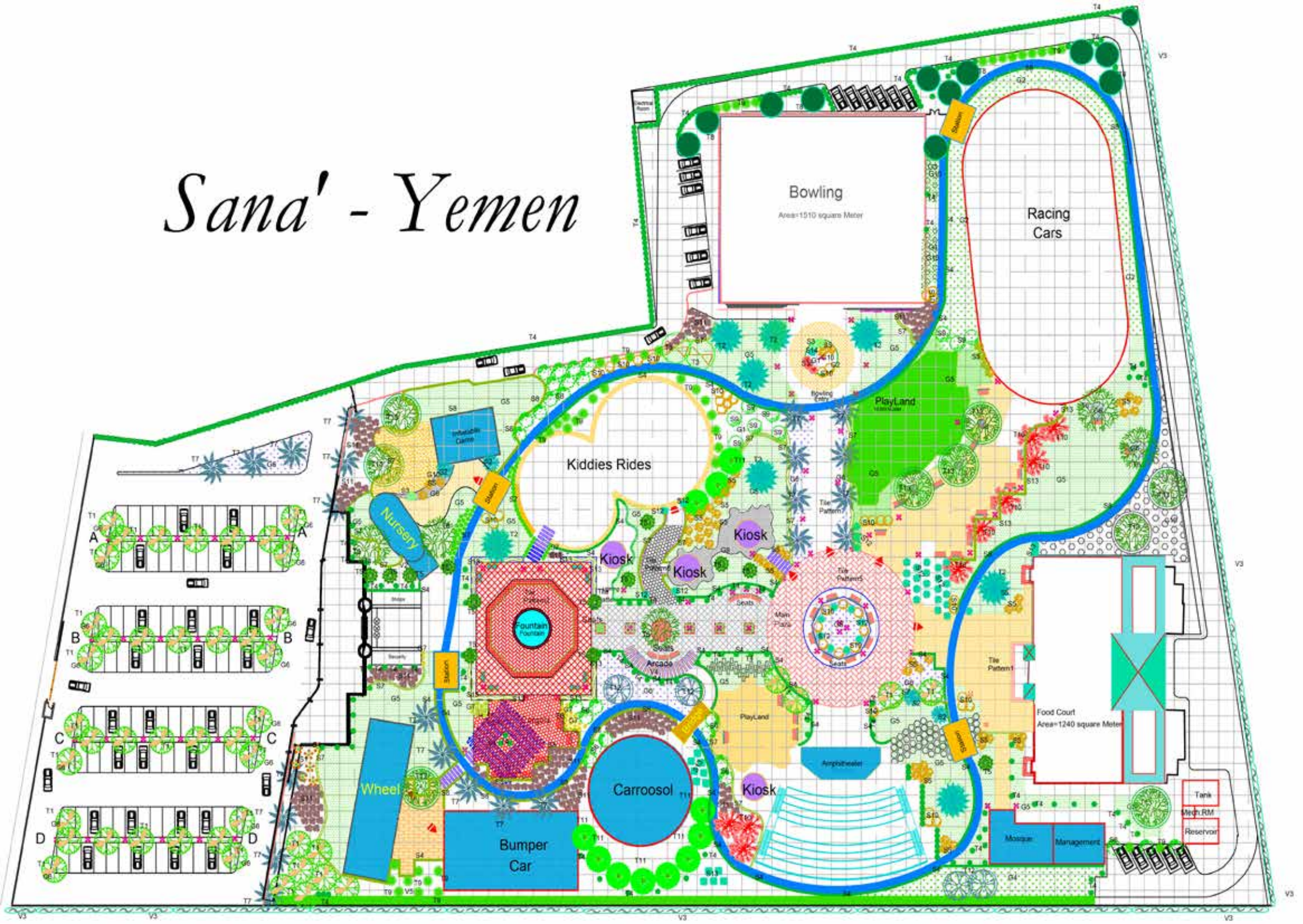
All landscape elements were intentionally incorporated not as individual performers, but rather as contributors to a harmonious symphony of utility, functionality, and relaxation. They work in full synchronization with the amenities and architecture, creating a vibrant and cohesive environment.

Location: Sana'a, Yemen

Scope of work: Hard, Soft Landscape, Irrigation systems & Lighting systems design, Consultancy, & Supervision

BUA: 45,000.00 m<sup>2</sup>

# Sana' - Yemen





# DAJANI AGRIBUSINESS

LANDSCAPE ARCHITECTURE  
& FRUIT TREES EXPERT

**Jordan is blessed with a pleasant weather cycle. In general, dry summers & temperate winters facilitate many unique natural resources that can be developed and utilized in the landscape industry.**

**At Dajani Agribusiness, our team of landscape designers and contractors offer a diverse range of quality materials and services that elevates garden care. We possess a profound understanding of horticulture, including agronomy; botany; physiology and agriculture. This expertise has established us as leaders in our field.**

**This nuanced foundation of knowledge and experience is a powerful tool in manifesting the creative vision of our projects, from a simple backyard garden to corporate & touristic scale projects.**

**Fine ART. Unique TASTE. Vast EXPERIENCE. Invest in Dajani Agribusiness to sculpt your idyllic space.**

**Managing Director**

**Maher Dajani**

*Maher Dajani*

# وثيقة خبرة

## برنامج الإعتماد والتأهيل المهني للمهندسين الزراعيين



نقابة المهندسين الزراعيين  
Agricultural Engineers Association

تشهد نقابة المهندسين الزراعيين الأردنيين أن المهندس الزراعي

ماهر محمد نافذ الدجاني

قد أستكمل /ت كافة المتطلبات التي نص عليها نظام ممارسة المهنة رقم (٦٠) لسنة ٢٠١٥

الصادر عن مجلس الوزراء وتعليمات وزير الزراعة اللازمة للحصول على رتبة **خبير**

في مجال هندسة الحدائق والمواقع ضمن قطاع هندسة الحدائق و المواقع

وعليه فقد تم منحكم الرتبة المهنية أعلاه بتاريخ ٢٠١٦ / ١٠ / ١٠

نقيب المهندسين الزراعيين

رئيس اللجنة التوجيهية لبرنامج الإعتماد المهني

المهندس الزراعي محمود زياد أبو غنيمه



١/٢٠١٦/١٠ / ١٠٠٦٠٩

الرقم المرجعي للشهادة:

هذه الشهادة معتمدة من إتحاد المهندسين الزراعيين العرب والدول الأعضاء في الإتحاد.





# DAJANI AGRIBUSINESS

LANDSCAPE ARCHITECTURE  
& FRUIT TREES EXPERT

## **LIST OF REFERENCES**

Commercial

Design, Installation, Plantscaping, Garden Care, Consultancy, Project Management & Supervision.

## COMMERCIAL:

- 1 M/s. Royal Jordanian New Headquarters / 5th circle - Soft Landscape Implementation Package. Contracting, Garden Care & Landscaping.
- 2 M/s. Al Tajamouat for Touristic Projects Co. Plc - Taj Mall/ Abdoun, Soft Landscape, Irrigation & Lighting - Design, Installation, Garden Care & Landscaping.
- 3 M/s. Rotana Tower Hotel - Soft Landscape Implementation Package./ Al-Abdali -Soft Landscape Implementation Package. Design ,Installation, Garden Care & Landscaping.
- 4 M/s. Housing Bank for Trade and Investment- New Headquarters/ Shmeisani - Hard, Soft Landscape, Irrigation systems & Lighting systems design.
- 5 M/s Galleria Mall / Amman - Soft Landscape Implementation Package. Design ,Installation, Garden Care & Landscaping.
- 6 M/s. Ayla Oasis/ Aqaba - Soft Landscape full site Assessment & Irrigation system design in two islands.
- 7 M/s. Saraya Aqaba New Offsite Facilities/ Aqaba - Hard, Soft Landscape, Irrigation systems & Lighting systems design.
- 8 M/s. Al- Murjan 200 Bed Hospital on Kings Road / Jeddah - Saudi Arabia - Hard, Soft Landscape, Irrigation systems & Lighting systems design.
- 9 M/s. Riyadh Municipality, General Directorate of Parks & Landscaping The 60 mosques, within the "Improvement of traffic safety and mosques development project" (Phase II) / Riyadh - Saudi Arabia - Riyadh 60 Mosques Hard, Soft Landscape, Irrigation systems & Lighting systems design.
- 10 M/s. Palestinian Embassy and the Palestinian Ambassador residence / Khartoum - Sudan - Hard, Soft Landscape, Irrigation systems & Lighting systems design.
- 11 M/s The Fountain Mall / Aqaba - Design & Supervision
- 12 M/s. Karam Beirut Restaurant / 3th circle - Design.
- 13 M/s. Modern American Schools / 7th circle - Design , Installation & Garden Care.
- 14 M/s. Al Manal Tourism Complex (VIP Club, Food courts, Gardens & Luna Park) , 45000m2 of landscaped area / Sana`a-Yemen - Hard, Soft Landscape, Irrigation systems & Lighting systems design., Consultancy & Supervision.
- 15 M/s. The Royal Hashemite Court RHC Renovation & Development of the Royal Cemetery / Amman - Design.
- 16 M/s. Royal Jordanian Operation parking lots / Queen Alia Airport - Hard, Soft Landscape, Irrigation systems & Lighting systems design.
- 17 M/s. Zain Telecom Head Quarter and Branches main garden & Indoor plants /Design, Installation, Garden Care & Landscaping.
- 18 M/s. Australian Embassy and the Australian Ambassador residence / Abdoun - Garden Care.
- 19 M/s. Le Royale Hotel / Landscaping / Landscape design services & Garden Care.
- 20 M/s. Specialty Hospital - (In-Door/ Out Door) / Design, Installation, Garden Care & Landscaping
- 21 M/s.Knowledge Economic City (KEC) / Al-Madinah Al-Munawarah - Saudi Arabia - Hard, Soft Landscape, Irrigation systems & Lighting systems design.
- 22 M/s. Sehatcom University city / Jeddah - Saudi Arabia - Hard, Soft Landscape, Irrigation systems & Lighting systems design.
- 23 M/s. Babel Contracting Company - Sindan Country Side residential Villas Project / Ajloun - Hard, Soft Landscape, Irrigation systems & Lighting systems design.
- 24 H.R.H. Princess Basma's Farm - Design, Installation, & Supervision. 2million m2 of designed farm with all facilities.
- 25 M/s. Al-Saraya Housing & Investment Company- Hasloun Villas Complex Project / Dabouq- Design, Installation & Garden Care.
- 26 M/s. Y.A.N Group / Design , Installation, Garden Care & Landscaping.
- 27 M/s. Bakker Bros. Co.- Holland, Experimental station, Offices & Garden Landscape project / Design & Consultancy.
- 28 M/s. Four Seasons Hotel / Plant Supplier & Landscaping.
- 29 M/s. CENTRO Restaurant / Design, Installation & Garden Care.
- 30 M/s. United Nations (H.Q. - Indoor Landscaping) / Design & Installation.
- 31 M/S. Harir Palace Hotel / Dahiyat Al-Rasheed - Design.
- 32 M/S. Middel East University/ Design , Contracting & Garden Care.

Surf our  
**ADDITIONAL PORTFOLIOS**



Residential Portfolio



Fruit Tree Portfolio

# DAJANI AGRIBUSINESS

LANDSCAPE ARCHITECTURE  
& FRUIT TREES EXPERTS



Address:

7th circle, 3, Abdullah Al-Hmood Str.,  
Rahhal complex, Second floor.

P.O. Box 1266 Amman, 11953 Jordan

Email: [info@dajaniagri.com](mailto:info@dajaniagri.com) | Jordan, Amman

Tel: +962 6 586 86 87/78 | Mobile: +962 79 907 7703

[www.dajaniagri.com](http://www.dajaniagri.com)

